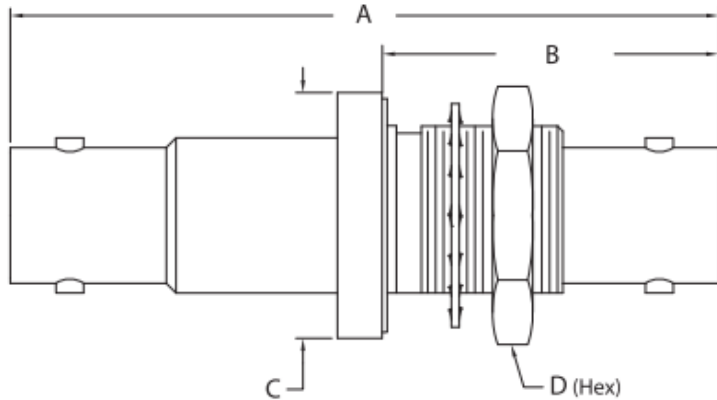


SHV connector used in SoLID



- Measured A= 1.99 inch
- Measured B= 1.077 – 0.120 = 0.95 inch
- This matches to 1709-1 (non-Hermetic)

FIGURE 6

- We have 3 spare SSV connector
- Based on measurement A (length) and B we have 1709-1 (non hermetic)
- Spec sheet is [here](#)